

Fiber Optical Multiplexer

MUXpro 700



Description

MUXpro 700 is the best optical fiber multiplexer on the market for aggregating up to 4E1/T1 + 4FE or 3E1/T1 + universal data port + 4FE lines into a single fiber optic link. With advanced features such as on-board SNMP management, optical link automatic 1+1 protection and full diagnostic functions, the MUXpro 700 provides an optimal platform for concentrating and extending T1/E1/Data/Ethernet lines over a fiber optic link. This platform, designed with modern FPGA technology, offers exceptional reliability, low power consumption and unprecedented flexibility.

The T1/E1/Data/Ethernet interfaces conform to ITU standards in all aspects, making the MUXpro 700 compatible with all existing T1/E1/Data/Ethernet environments. Its tributary interface can also be configured by software either with all four E1 links or three E1 and one universal data links to accommodate unpredictable circumstances in field application. On-board four Fast Ethernet links provide real-time data transmission over an optical link. It also offers various optical interfaces and modules to satisfy varying distance requirements while providing automatic protection switching for optical link redundancy. The cost-efficient single fiber solution (WDM) is applicable.

Managing the MUXpro 700 can be conducted easily through either universal NMS via SNMP agent or craft port with a general VT-100 or emulation terminal. The full LED display feature enables carriers to monitor the entire status, the optical interface alarm status and all other working conditions with clarity.

The MUXpro 700 is a great standalone design, which is also available for mounting in a 19-inch rack or integrating two devices into a 1U high 19-inch rack, providing a compact, cost-effective central solution. Furthermore, the card type, FLU card, can also accommodate into Scorpio 1000 universal shelf.

Features

- Compact standalone design
- Fiber MUX for 8M transmission plus 4 Fast Ethernet transmission
- 1+1 Fiber optical protection
- On-board SNMP agent enabled with UNMS control
- Four on-board Fast Ethernet transmission
- Flexible E1/T1/V.35 configuration
- WDM solution available
- Clearly status indicators on front panel
- Diagnostic loop back function
- High density FLU card accommodating up to 14 FOM in Scorpio 1000

Specifications

Transmission Mode

- 4 E1/T1 Links + 4 Fast Ethernet
- 3 E1/T1 Links + 1 V.35 + 4 Fast Ethernet

Optical Interface

- Data Rate: MAX. 125Mbit/s
- Optical Laser Source: Fabry Perot
- Optical Wavelength: 1310nm
- Optical output power: -6dBm
- Receiver Sensitivity: -32dBm
- Connector: SC/PC or FC/PC

User Interface

E1 Interface

- Line Coding: HDB3
- Line Rate: 2.048 Mbps
- Line Impedance: 120/75 ohms
- Compliance: ITU-T G.703, G.704, G.706 and G.732
- Jitter Performance: Compliant with ITU-T G.823

T1 Interface

- Line Coding: AMI, B8ZS
- Line Rate: 1.544Mbps
- Line Impedance: 100 ohms
- Compliance: ITU-T G.703, G.824, and ANSI T1.403
- Jitter Performance: Compliant with ITU-T G.824
- Connector: DB-25 with adapter cable

Universal Data Interface

- V.35, V.36, X.21, EIA-530 (Software configurable)
- Data rate: Nx64Kbps (N=1~32)
- Connector: DB-25 with adapter cable

Ethernet Interface

- 10/100 Base-Tx Ethernet Interface

Timing Source Setting

- Internal, DTE, Receive clock

Diagnostic Function

- LL: Local Loopback
- RL: Remote Loopback

Management

- Configuration via craft port VT-100
- Standard SNMP with Universal NMS

Dimensions

- 210mm (W) x 285mm (D) x 41mm (H)

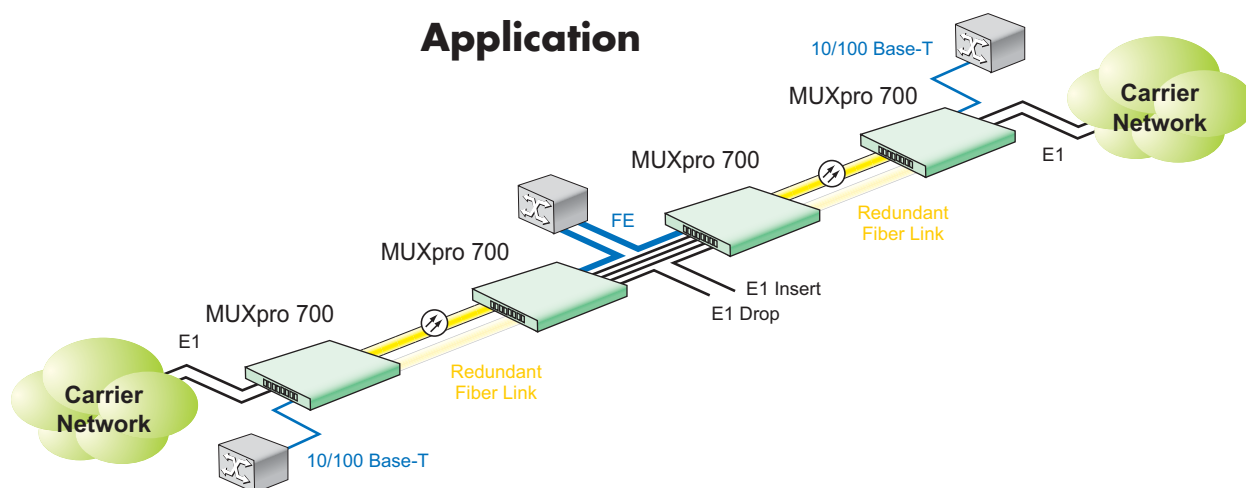
Operating Environment

- Operation temperature: 0°C~50°C
- Storage temperature: -25°C~70°C
- Relative humidity: up to 95% (non-condensing)

Power Requirement

- AC: 110V~240V, 50~60Hz
Autorange
- DC: -36V~72V VDC

Application



The Professional Partner

Headquarters

No. 25, Alley 15, Lane 120, Sec. 1. Nei-Hu Rd, 114 Taipei, Taiwan

TEL: 886-2-2658-3000

FAX: 886-2-2658-3232

E-mail: sales@tainet.net